

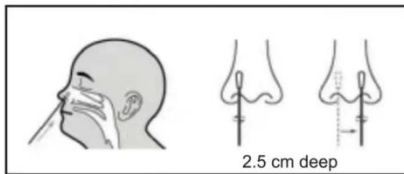
## MATERIALS SUPPLIED

■ test card ■ Sterile swab ■ Extraction tube with buffer and nozzle cap ■ Tube stand ■ instruction manual

## Specimen collection method ( 4in1)

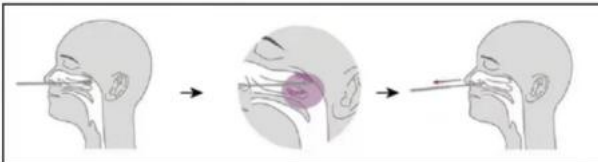
- 1) Anterior-nasal swab
- 2) Nasopharyngeal swab ( recommended method )
- 3) Oropharyngeal swab
- 4) Saliva (Lolly-Test)

### 1) Anterior-nasal swab



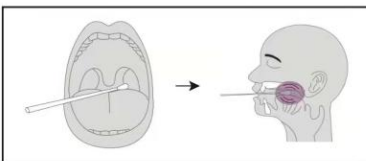
- 1) Place an extraction tube in the cardboard tube rack.
- 2) Carefully insert the swab into the patient's nostril. The swab tip should be inserted up to 2.5 cm deep from the edge of the nostril.
- 3) Swab along the mucosa in the nostril to ensure that both mucus and cells are collected.
- 4) Rotate the swab several times ,Slowly and gently remove the swab from the nostril .It is easier to pick up about 6 cm from cotton ball by fingers. Do not touch the cotton bulb

### 2) Nasopharyngeal swab



- 1) Place an extraction tube in the cardboard tube rack.
- 2) Tilt the patient's head slightly backward. Carefully insert the swab into the nostril of the patient, reaching the surface of posterior nasopharynx that presents the most secretion.
- 3) While inserting, gently rub and roll the swab. Once you feel pharyngeal resistance, stop and allow the swab to absorb secretions.
- 4) Slowly and gently remove the swab outward while gently rotating it between your fingers.

### 3) Oropharyngeal swab



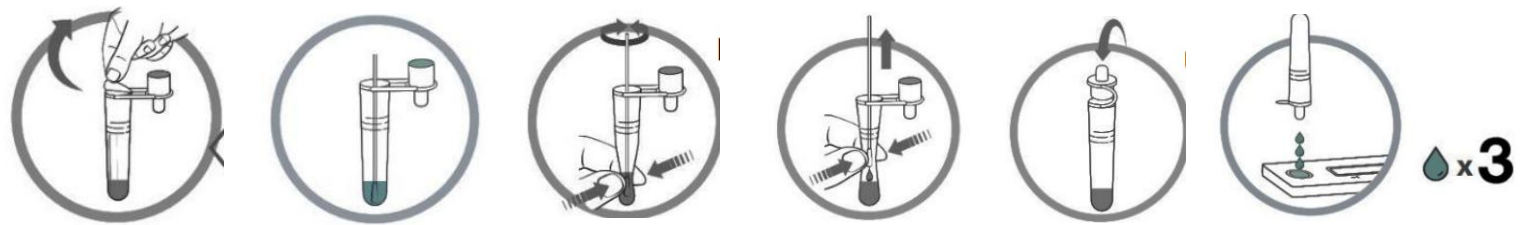
- 1) Place an extraction tube in the cardboard tube rack.
- 2) Ask the patients open their mouth wide and make "Ah" sounds, exposing the pharyngeal tonsils on both sides.
- 3) Hold the swab firmly and wipe back and forth on the pharyngeal tonsils on both sides at least three times per side with moderate force. Do not touch the palate, tongue, teeth or gums.
- 4) Remove the swab while gently rotating it between your fingers.

## 4) Saliva (Lolly-Test)



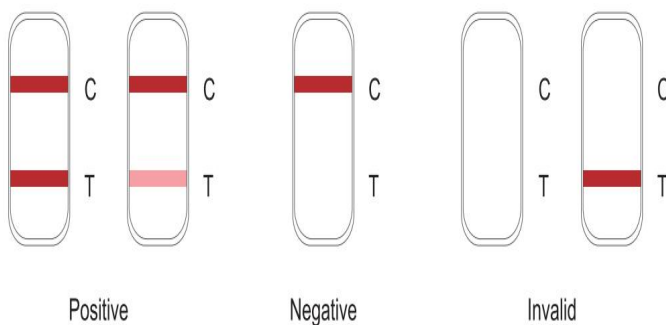
- 1) Place an extraction tube in the cardboard tube rack.
- 2) Press the tip of the tongue against the lower root of the jaw. Cough deeply. Make the sound of "kuuuu" to concentrate the saliva.
- 3) Place the swab on the tongue for at least 10 seconds, rotate it 3 times or more to fully absorb the saliva.

## Test Procedure



1. Tear off the seal of extraction buffer tube.
2. Insert the swab into the tube and dip the swab up and down in the liquid for at least 10 seconds. Then, hold the swab against the bottom of the tube and rotate it 3 turns, making sure that no contents splash out of the tube.
3. Remove the swab while squeezing the sides of the tube to extract the liquid from the swab.
4. Tighten the cap on the sample collection tube and shake the sample collection tube vigorously to mix the sample and sample extraction buffer.
5. Dispense 3 drops (approximately 100 $\mu$ L) into the sample well of the test cassette via the dropper tip.
6. Interpret the test results after 15 minutes. Do not interpret the results after 20 minutes.

## Interpretation of results



**POSITIVE:** Two lines appear. One colored line appears in the control line region (C) and another colored line appears in the test line region (T).

**NEGATIVE:** A colored line appears in the control region (C). No visible colored line appears in the test line region (T).

**INVALID:** Control line does not appear. Insufficient sample volume or incorrect handling are the most likely reasons for the control line not appearing. Check the procedure and repeat the test with a new test cassette.